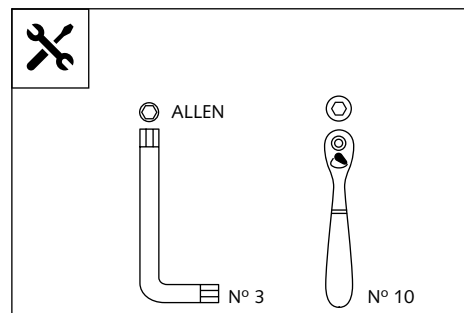


PARAMANOS PARA - HANDPROTECTORS FOR - HANDCHUTZPROTEKTOREN FÜR
YAMAHA XMAX
125 '14- / 250 '14- / 300 / 400



Ref.: 8111

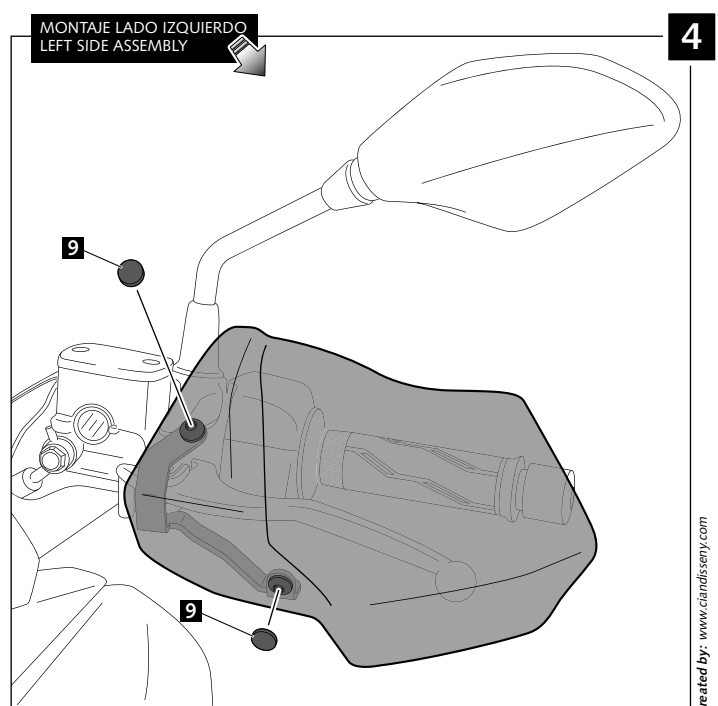
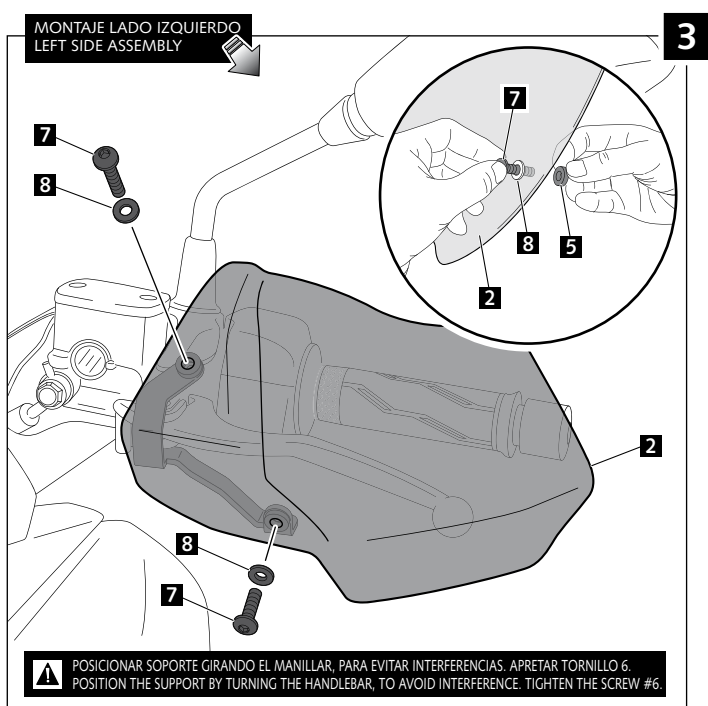
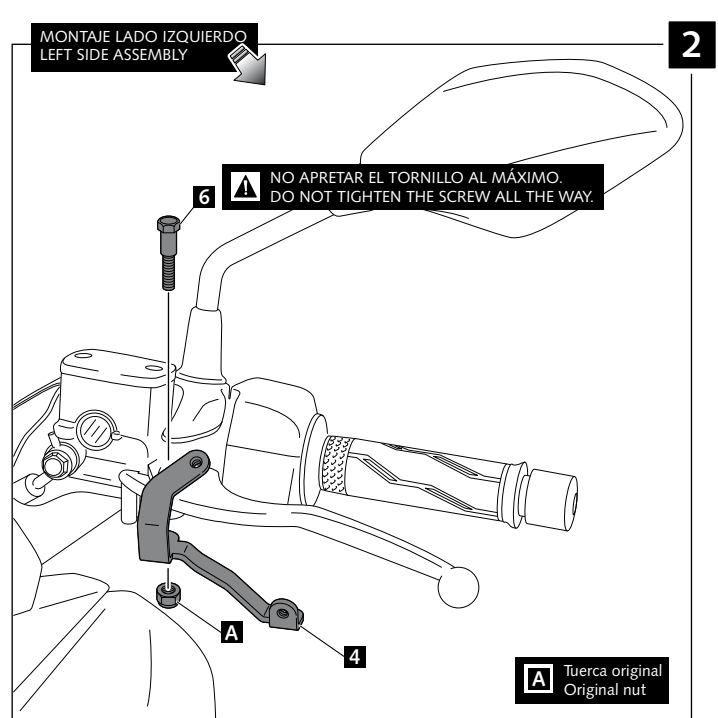
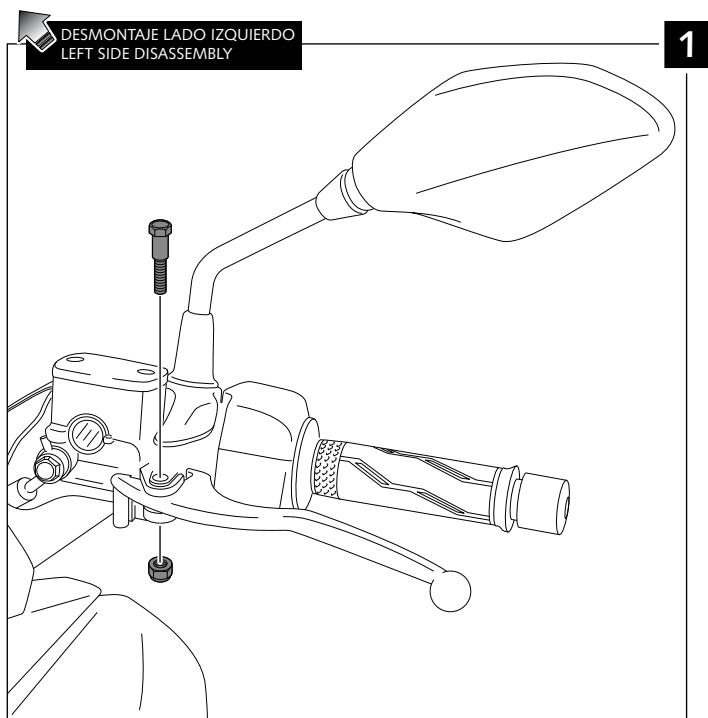


1 persona / 1 person
 20 min
Fácil - Easy
Media-Intermediate
Difícil-Difficult

ID	PIEZA/ PART	DESCRIPCIÓN	DESCRIPTION	QTY	REF.
1		Paramanos derecho	Right handguard	1	8111H/WM3
2		Paramanos izquierdo	Left handguard	1	8111H/WM3
3		Soporte metálico derecho	Right metal support	1	SOPOR-2P-4-8111
4		Soporte metálico izquierdo	Left metal support	1	SOPOR-2P-4-8111
5		Arandela de goma Ø4,5xØ11,5x2mm	Ø4,5xØ11,5x2mm Rubber washer	4	ARAND-EPDM--722
6		Tornillo especial con valona M6	M6 special screw with flange	2	TORNI-E-----770
7		Tornillo Allen M5X11 ISO7380	M5X11 ISO7380 Allen screw	4	TORNI-AI----520
8		Arandela de Nylon M5x1	M5x1 Nylon washer	4	ARNV000000245
9		Tapón tornillo M5 ISO 7380	M5 ISO 7380 Allen screw cap	4	TAPON-----85

PARAMANOS PARA - HANDPROTECTORS FOR - HANDSCHUTZPROTEKTOREN FÜR
YAMAHA XMAX
 125 '14- / 250 '14- / 300 / 400

INSTRUCCIONES DE MONTAJE - MOUNTING INSTRUCTIONS - MONTAGEANLEITUNG



PARAMANOS PARA - HANDPROTECTORS FOR - HANDSCHUTZPROTEKTOREN FÜR
YAMAHA XMAX
 125 '14- / 250 '14- / 300 / 400

INSTRUCCIONES DE MONTAJE - MOUNTING INSTRUCTIONS - MONTAGEANLEITUNG

